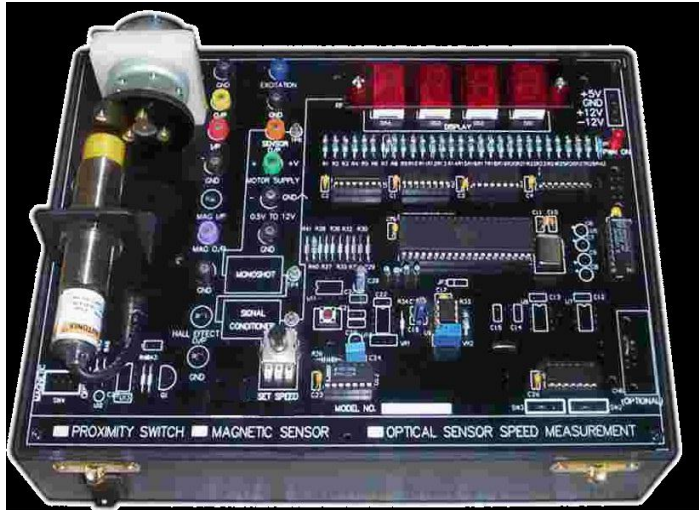


SAP E & C STUDY OF SPEED MEASUREMENT USING TACHOMETER
(PRODUCT CODE: SAP - 49)



STUDY OF SPEED MEASUREMENT USING TACHOMETER (SAP – 49)

The Setup for speed measurement (SAP – 49) gives an idea regarding the application of Tachometer to measure speed in industrial environment.

Technical Specification: -

No.	Item Name	Technical Specifications
1	Speed sensor-	Inductive proximity/photoelectric pick-up, 3wire, 24 V DC
2	Speed indicator (RPM)-	Supply voltage-230 VAC Input from- inductive proximity or photoelectric pick-up Mounting- flush on panel front Display – 7 segment Red LED to measure speed of shaft of motor
3	AC/DC motor-	Supply voltage:12 V/230 VAC FHP Speed: 1000 RPM – 1500 RPM Torque: ½ Kg

Range of Experiments-

- ❖ Speed measurement by using Tachometer

Features: -

- ❖ Compact Ergonomic Design.
- ❖ User Friendly, Self Explanatory Systems.
- ❖ Robust Construction.
- ❖ Enhanced Electrical Safety Considerations
- ❖ Training Manuals for Operation Ease.
- ❖ Inbuilt Safety Measures to avoid improper usage.
- ❖ Test points provided on front panel to measure pulses.

SAP E & C STUDY OF SPEED MEASUREMENT USING TACHOMETER
(PRODUCT CODE: SAP - 49)



System Dimensions- 1Ft. (L) X 1Ft. (W) X 1 Ft. (H)

Services Required-

- ❖ Electric Supply of 1 ϕ 230 VAC.

Note-

All descriptive matter and illustrations are intended to give only a general idea of the equipment Detailed specifications may be altered at the company's discretion without any notice.

